



Malaysian
Students'
Association
Japan

PEOPLE

DEVELOPMENT

BUREAU

Prepared by: MAWADDAH FARHAH BINTI MOHD SAKHRI

Presented by: NUR ADLINA NAJWA BINTI MOHAMAD NOR

Index



1. Committee Members
2. Responsibility & Task
3. Achievements
4. Knowledge Gained
5. Challenges
6. Future Improvements

Bureau's Committee



Malaysian
Students'
Association
Japan



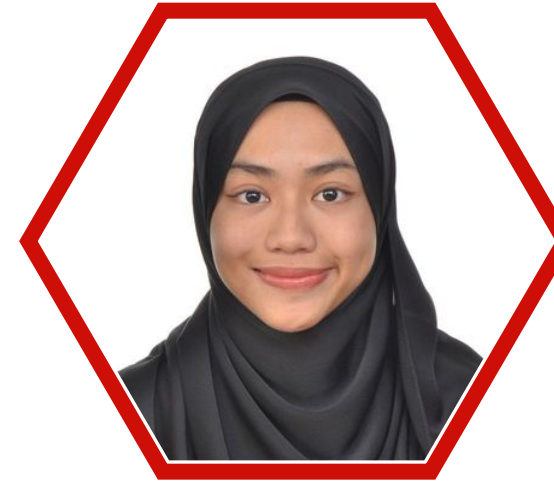
Abdul Alim



Nurain Fathanah



Nayli Afrina



**Fadhliyatul
Insyirah**



Muaz Fariz



**Leader:
Mawaddah Farhah**



**Secretary:
Nur Adlina Najwa**



**Supervisor:
Izzat Haiqal**



**Supervisor:
Tuan Nurul Alia**



Hasnul Iman

Responsibilities & Task



Malaysian
Students'
Association
Japan

I. Student Welfare & Well-Being

- Strengthen support systems for students' physical, emotional, and mental well-being.
- Organize peer support groups, community bonding activities, and stress-relief programs.

I. Reskilling & Upskilling Programs

- Collaborate with industry professionals for hands-on learning (e.g., public speaking) Develop soft skills & technical skills training to equip students for future

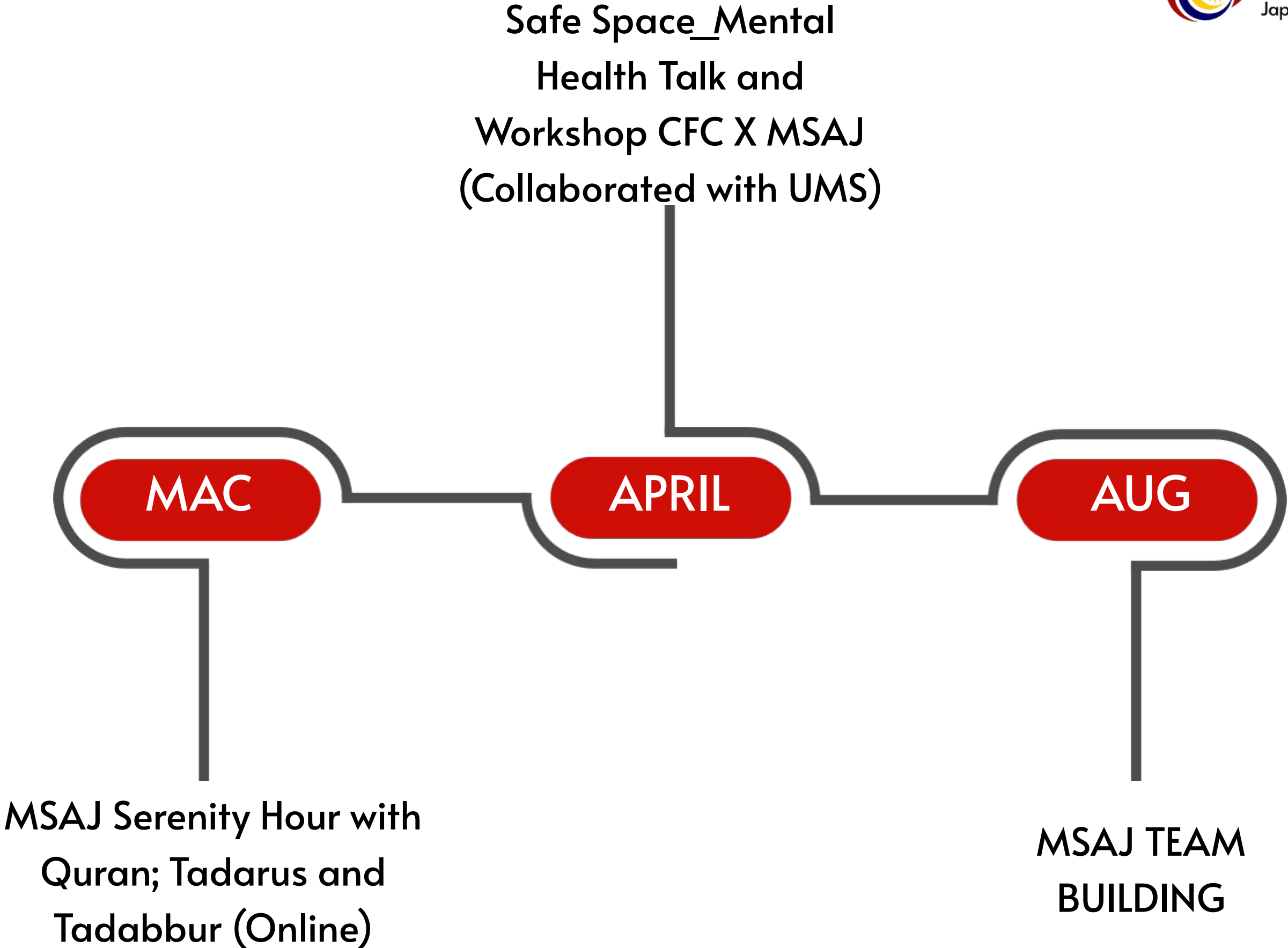
I. Spiritual & Character Development (Rohani)

- Arrange sharing circles, anonymous hotline platform and community service with a spiritual emphasis.

Achievements



Malaysian
Students'
Association
Japan



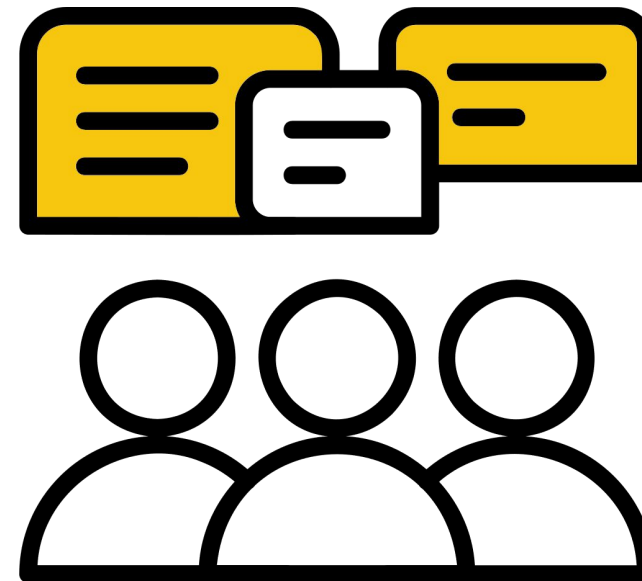
Knowledge Gained



Malaysian
Students'
Association
Japan



**Importance of
clear role
definition**



**Managing program
across different
region**



**Communication &
Coordination in
large teams**

Challenges



Malaysian
Students'
Association
Japan

I. Team Members with Varied Experience Levels

- Differences in experience among members required additional time for guidance and alignment.

I. Learning While Executing Programs

- Many processes were learned during implementation, which increased the workload and required frequent adjustments.

I. Time Constraints Due to Academic Commitments

- Members' academic schedules and personal responsibilities limited availability for consistent planning and execution.

Future Improvements



Malaysian
Students'
Association
Japan

I. Implement More Realistic Planning Timelines and Events

- Prioritize a smaller number of impactful activities and ensure thorough execution.

I. Strengthen the Relationship Between Bureau's and Team Members

- Organize informal gatherings to foster teamwork and improve collaboration.

I. Provide Early Training or Briefings for New Members

- Conduct orientation sessions to align understanding and build confidence.

I. Set Clear Expectations from the Beginning

- Establish clear workload and commitment expectations from the beginning.

I. Encourage Shared Leadership and Task Delegation

- Distribute responsibilities more evenly to prevent burnout.



**Malaysian
Students'
Association
Japan**

Thank you.